

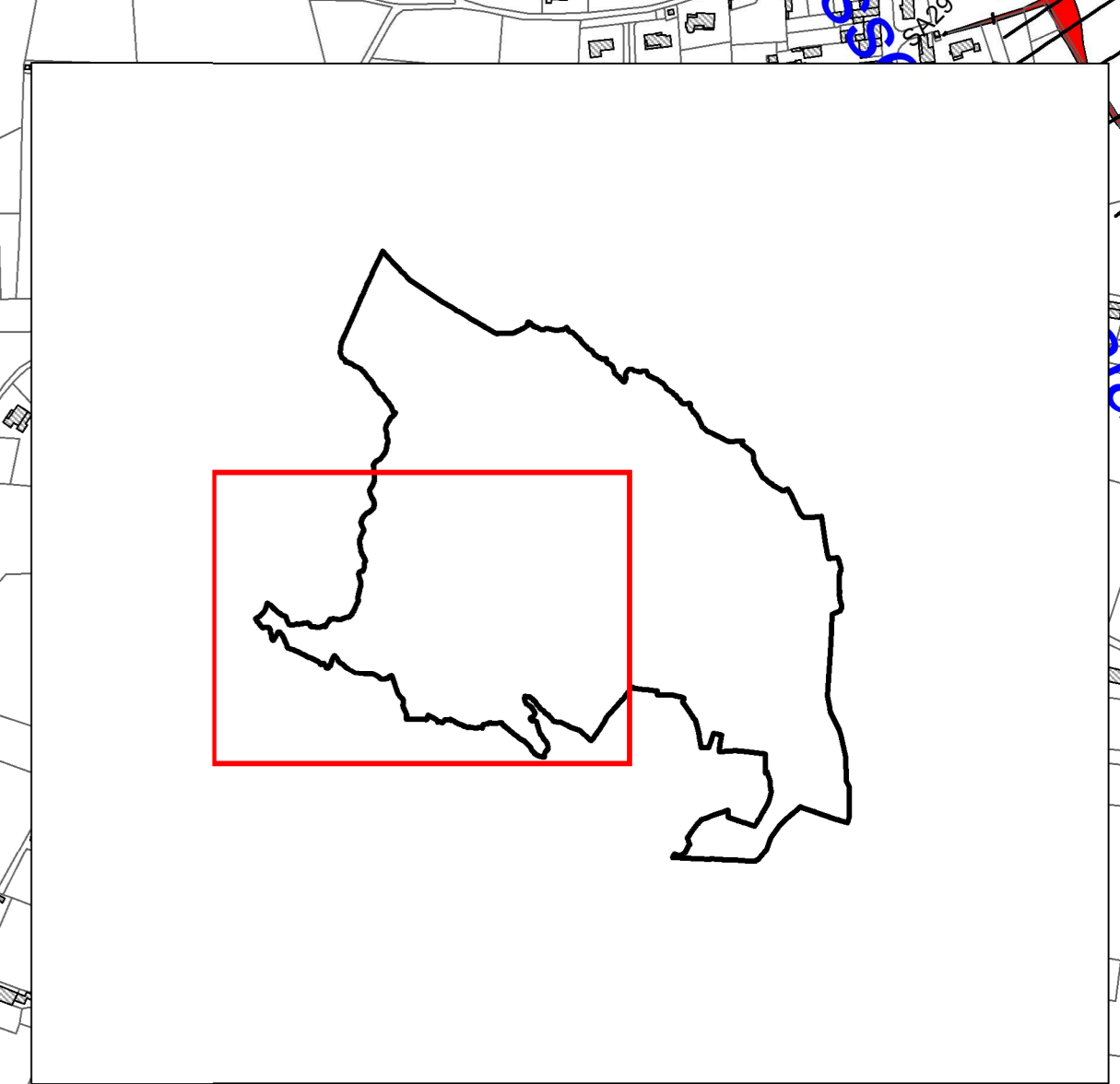
PLAN DE PREVENTION DES
RISQUES D'INONDATION

Commune de Saint Marcel d'Ardèche

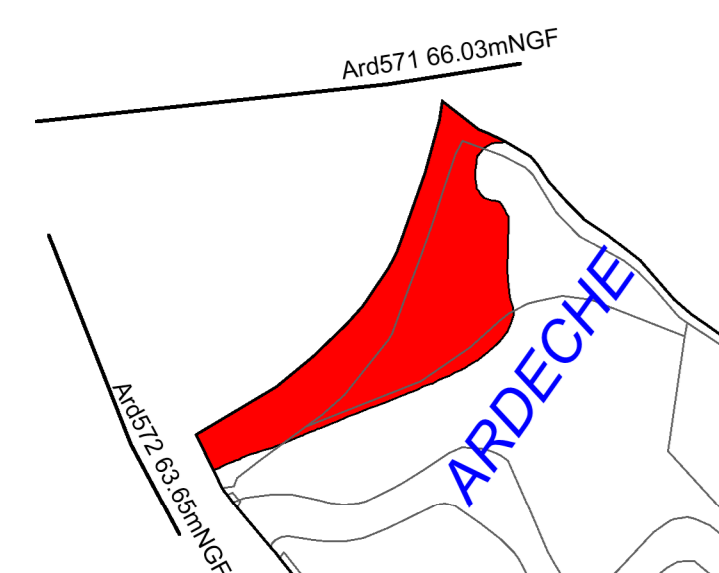
Zonage réglementaire
planche OUEST
(3/3)

Approbation

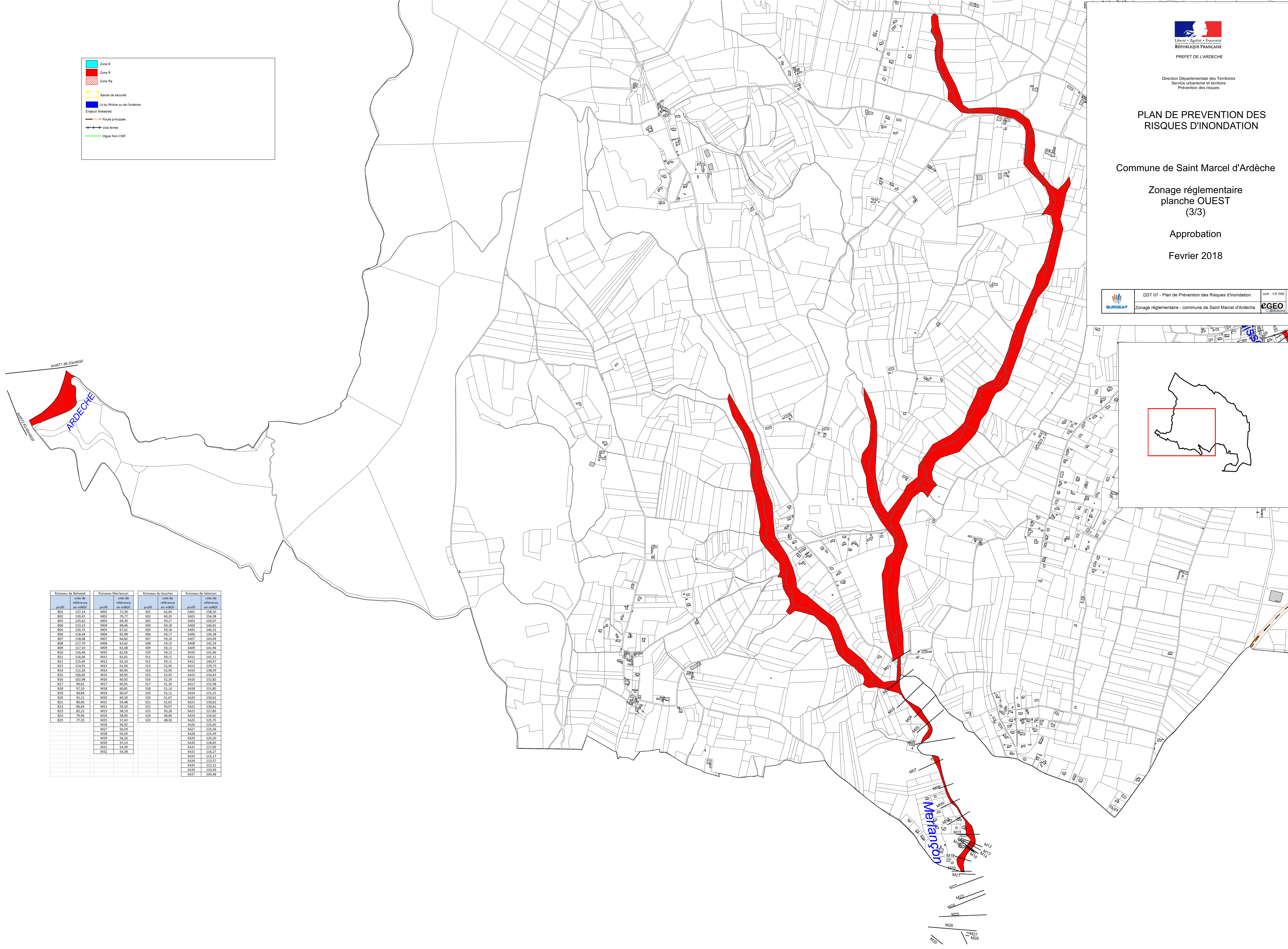
Fevrier 2018



■ Zone B
■ Zone R
 Zone Ra
 Bande de sécurité
 Lr du Rhône ou de l'Ardèche
 Enjeux linéaires
 Route principale
 Voie fermée
 Digue Non CNR



| Ruisseau de Belvezet | | Ruisseau Merlançon | | Ruisseau du Souchas | | Ruisseau de Salaman | |
|----------------------|---------------------------|--------------------|---------------------------|---------------------|---------------------------|---------------------|---------------------------|
| profil | cote de référence en mNGF | profil | cote de référence en mNGF | profil | cote de référence en mNGF | profil | cote de référence en mNGF |
| B01 | 137.14 | M01 | 72.30 | S01 | 62.08 | SA01 | 158.10 |
| B02 | 130.43 | M02 | 70.77 | S02 | 60.20 | SA02 | 154.38 |
| B03 | 125.62 | M03 | 69.30 | S03 | 59.27 | SA03 | 150.07 |
| B04 | 123.23 | M04 | 68.46 | S04 | 59.18 | SA04 | 146.61 |
| B05 | 120.75 | M05 | 67.61 | S05 | 59.18 | SA05 | 146.31 |
| B06 | 118.44 | M06 | 65.98 | S06 | 59.17 | SA06 | 144.38 |
| B07 | 118.08 | M07 | 64.82 | S07 | 59.16 | SA07 | 143.09 |
| B08 | 117.70 | M08 | 63.62 | S08 | 59.15 | SA08 | 142.19 |
| B09 | 117.10 | M09 | 63.08 | S09 | 59.13 | SA09 | 141.94 |
| B10 | 116.46 | M10 | 62.56 | S10 | 59.12 | SA10 | 141.66 |
| B11 | 116.06 | M11 | 61.61 | S11 | 59.11 | SA11 | 141.11 |
| B12 | 115.45 | M12 | 61.10 | S12 | 59.11 | SA12 | 140.57 |
| B13 | 114.91 | M13 | 61.00 | S13 | 52.96 | SA13 | 139.73 |
| B14 | 111.26 | M14 | 60.96 | S14 | 52.94 | SA14 | 138.59 |
| B15 | 106.05 | M15 | 60.95 | S15 | 52.92 | SA15 | 134.43 |
| B16 | 102.88 | M16 | 60.92 | S16 | 52.89 | SA16 | 132.82 |
| B17 | 99.61 | M17 | 60.91 | S17 | 51.30 | SA17 | 132.58 |
| B18 | 97.10 | M18 | 60.91 | S18 | 51.14 | SA18 | 131.80 |
| B19 | 94.84 | M19 | 60.47 | S19 | 51.11 | SA19 | 131.21 |
| B20 | 93.21 | M20 | 60.30 | S20 | 51.07 | SA20 | 130.62 |
| B21 | 89.06 | M21 | 59.48 | S21 | 51.03 | SA21 | 130.62 |
| B22 | 86.64 | M22 | 59.10 | S22 | 50.97 | SA22 | 130.62 |
| B23 | 83.22 | M23 | 58.19 | S23 | 50.28 | SA23 | 127.85 |
| B24 | 79.96 | M24 | 58.00 | S24 | 49.00 | SA24 | 126.62 |
| B25 | 77.33 | M25 | 57.43 | S25 | 48.30 | SA25 | 125.75 |
| | | M26 | 56.92 | | | SA26 | 125.65 |
| | | M27 | 56.59 | | | SA27 | 125.56 |
| | | M28 | 56.59 | | | SA28 | 125.49 |
| | | M29 | 56.26 | | | SA29 | 120.20 |
| | | M30 | 55.14 | | | SA30 | 118.65 |
| | | M31 | 54.39 | | | SA31 | 117.05 |
| | | M32 | 54.38 | | | SA32 | 116.27 |
| | | | | | | SA33 | 115.17 |
| | | | | | | SA34 | 113.57 |
| | | | | | | SA35 | 112.12 |
| | | | | | | SA36 | 110.59 |
| | | | | | | SA37 | 109.48 |



M07
 M08
 M09
 M10
 M11
 M12
 M13
 M14
 M15
 M16
 M17
 M18
 M19
 M20
 M21
 M22
 M23
 M24
 M25
 M26
 M27
 M28